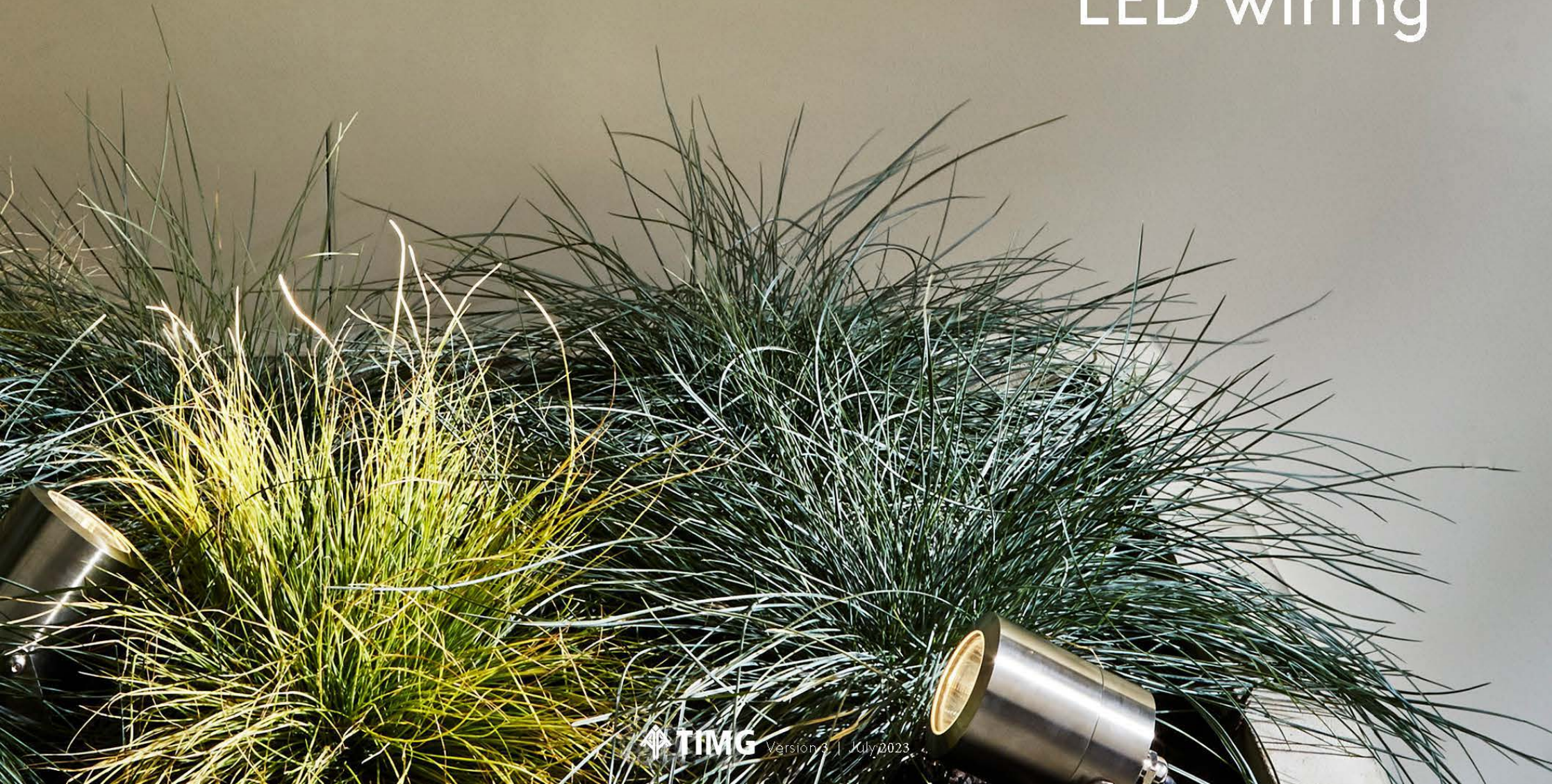


TIMG Guides

LED wiring



LED products + drivers

A driver reduces the voltage supplied to the LED and “drives” either a constant voltage or a constant current to the LED.

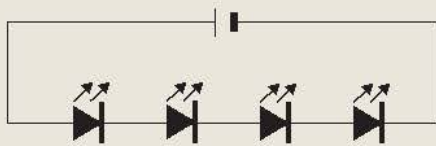
- ▶ It is very important that LED products which do not have a built-in driver must be connected to an LED driver, not directly to the mains. Connecting LEDs directly to mains will cause irreparable damage to the product.
- ▶ It is very important that the power is disconnected until installation of the LED products is completely finished. Any connections made with the power on will cause irreparable damage to the product.
- ▶ Some, but not all, of our drivers are IP65 rated. The installer must therefore ensure that, if required IP integrity is maintained, either by positioning the driver indoors or using waterproof boxes.

Wiring

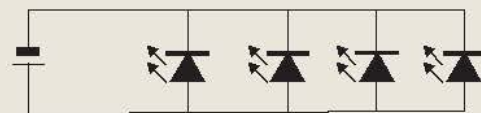


All constant current driven LED products **must** be wired in **series**

Correct - series wiring



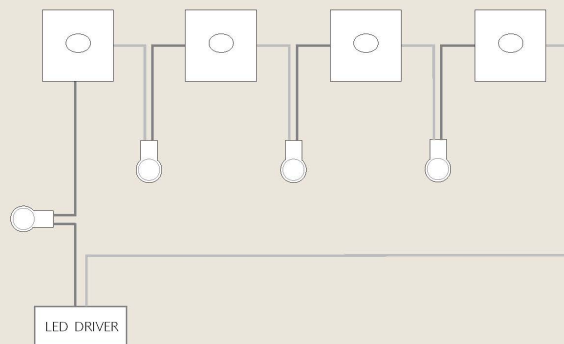
incorrect - parallel wiring



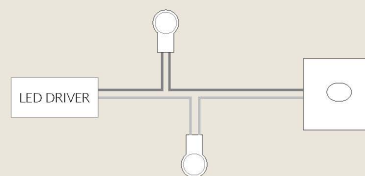
Connectors

Below are the diagrams we use on our instructions showing circuits including the connectors that we sell. These connectors are specifically for LED circuits and are gel filled to provide moisture resistance when used outside.

Multiple LED products connected to one driver



Single LED product connected to one driver



If you have any queries, please
contact our technical team for
further advice:
+86 186 7624 1518
info@timg.cc

lighting.timg.cc